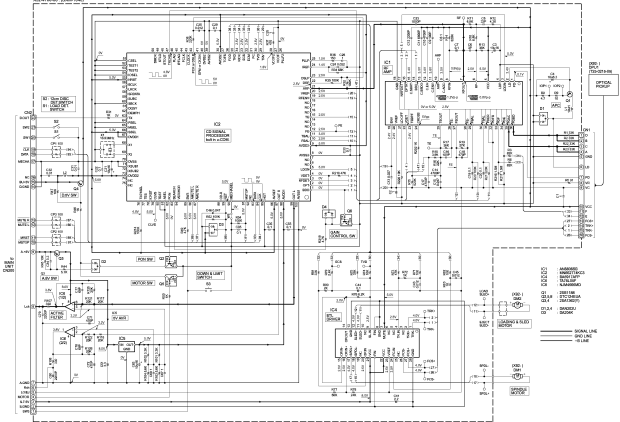


CAUTION: For continued safety, replace safety critical components only with manufacturer's recommended parts (refer to parts list).
 1. Indicates safety critical components. To reduce the risk of electric shock, leakage current or resistance measurements shall be carried out (opened parts are acceptably insulated from the supply circuit) before the application is returned to the customer.
 2. DC voltages are as measured with a high impedance voltmeter. Values may vary slightly due to variations between individual instruments and/or units.

KDC-5080R/RV,6016R
KENWOOD

KDC-5780-20 (7208-1042)



CAUTION: For continued safety, replace safety critical components only with manufacturer's recommended parts (refer to parts list).
 ⚡ indicates safety critical components. To reduce the risk of electric shock, leakage-current or resistance measurements shall be carried out (exposed parts are acceptably insulated from the supply circuit) before the appliance is returned to the customer.
 • DC voltages are as measured with a high impedance voltmeter. Values may vary slightly due to variations between individual instruments and units.

KDC-5080R/RV,6016R
 KENWOOD