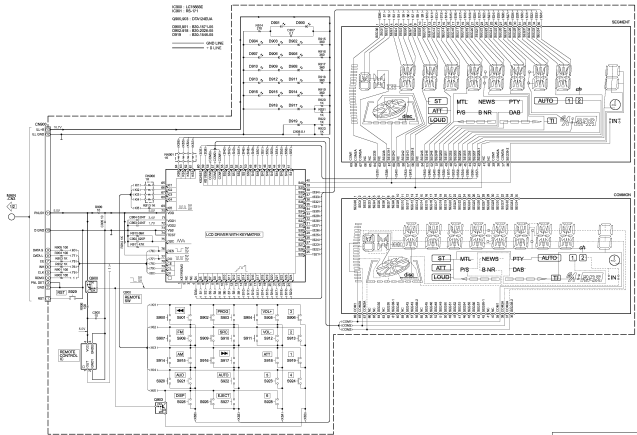


CAUTION: For continued safety, replace safety critical components only with manufacturer's recommended parts (refer to parts list).
 ⚠ Indicates safety critical components. To reduce the risk of electric shock, leakage current or resistance measurements shall be carried out (disposed parts are acceptably insulated from the supply circuit) before the appliance is returned to the customer.
 • DC voltages are as measured with a high impedance voltmeter. Values may vary slightly due to variations between individual instruments and units.

IC801 LC13900
 IC801 IC801
 Q801-Q811 CD4042B
 Q802-Q811 8SD1201-01
 Q812 8SD1300-01

— ONE LINE
 = FIVE

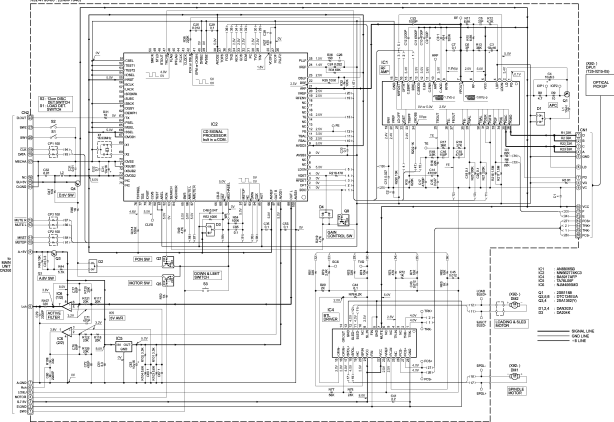


CAUTION: For continued safety, replace safety critical components only with manufacturer's recommended parts (refer to parts list).
 Δ Indicates safety critical components. To reduce the risk of electric shock, leakage-current or resistance measurements shall be carried out (imposed parts are acceptably insulated from the supply circuit) before the appliance is returned to the customer.
 - DC voltages are as measured with a high impedance voltmeter. Values may vary slightly due to variations between individual instruments and units.

KDC-5016,515S

KENWOOD

KDC-4780-01 (2084-1540)



CAUTION: For continued safety, replace safety critical components only with manufacturer's recommended parts (refer to parts list).
 ⊕ Indicates safety critical components. To reduce the risk of electric shock, leakage-current or resistance measurements shall be carried out (opened parts are acceptably insulated from the supply circuit) before the appliance is returned to the customer.
 • DC voltages are as measured with a high impedance voltmeter. Values may vary slightly due to variations between individual instruments or/and units.

KDC-5016,515S
 KENWOOD