

(X13-9680-1X)

MODEL NAME	UNIT No.	DESTINATION	Q	⊕	⊖	R11	R19
KDC-1156		0-10	YES	NO	YES	NO	260
KDC-2016							
KDC-1155	X13-980	0-11	YES	NO	YES	NO	270
KDC-2156		0-10	NO	YES	YES	NO	270
KDC-2018		0-10	NO	YES	NO	YES	270

(X13-9680-1X)

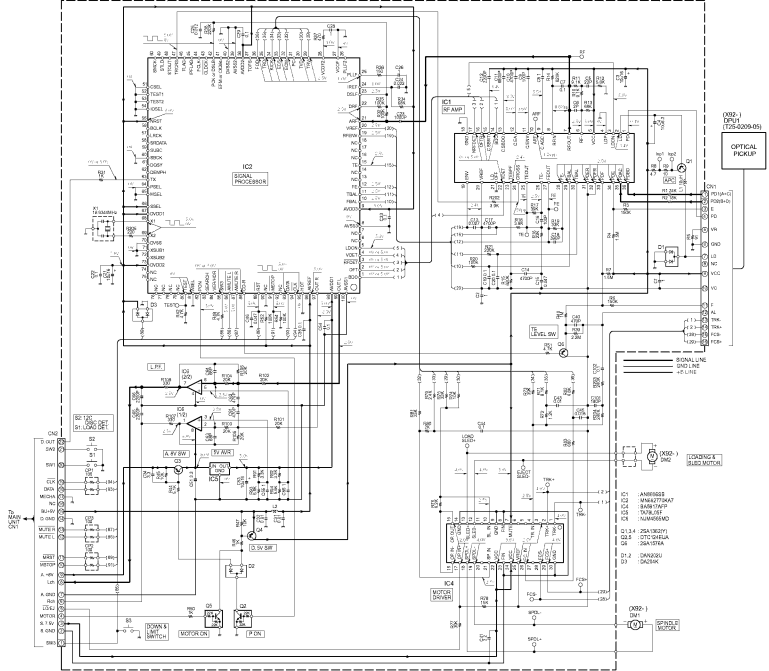
MODEL NAME	DESTINATION	Y03	Y01	D17	D17	ED1
KDC-1156	0-10	270	NO	850-1964-05	YES	808-1027-05
KDC-1155	0-11	270	NO	850-1962-05	NO	808-1027-05
KDC-2016	0-12	13	YF0	850-1963-05	NO	808-1010-05
KDC-2018	0-13	13	YES	850-1965-05	NO	808-1027-05

- IC1 : LC75558NE
 - IC2 : DS1-171
 - Q1 : DT11MEK or UN2111
- GND LINE
 -B L-PIC
- D1-16 : B30-1523-05
 D17 : B30-1572-05
 D22,23 : DA258K

CAUTION: For continued safety, replace safety critical components only with manufacturer's recommended parts (refer to parts list).
 ⚠ Indicates safety critical components. To reduce the risk of electric shock, leakage current or resistance measurements shall be carried out (exposed parts are acceptably insulated from the supply circuit) before the appliance is returned to the customer.

• DC voltages are as measured with a high impedance voltmeter. Values may vary slightly due to variations between individual instruments, circuit and units.

CD PLAYER UNIT
DKM-1520 (K32-4930-00)



25C1740S



TA78L05F



DTA114EK

DTA124EK

DA204K

DTC114YK

DTC124EK

PST9130NR

DTC143TK

DTC144EK

AN8806SB

2SA1036K

2SA1362

2SA1576A

OPTICAL PICKUP
(K32-0209-05)

25B1184



AN8806SB

25B1277



2SA1037K



DTC124EUA



NJM4565MD



DAN202U



- IC1 : AM9582S
- IC2 : MM4715KAT
- IC3 : BA9V31FP
- IC4 : TDA955
- IC5 : MM956 MD
- Q1,3,4 : 2SA1037P1
- Q2,6 : C77C0418A
- Q8 : 2SA1576A
- Q1,2 : DAN202U
- Q3 : 2SA204K

KDC-2016/215S/35MR

KENWOOD