

SERVICE MANUAL

COLOR TELEVISION

- Four kinds of CRT is used for this model, and the parts currently used differ.
- In this manual, only the change portion of Version 2, 3, and 4 is carried.
- If requiring the other information, see Service Manual of the TV-C1400(TYPE:KY,EZY,KHY) (S/M Code No. 09-009-352-0N1).

Version	CRT	S/M
1	A34JLL90X89(ORI)	09-009-352-0N1
2	A34JLL90X01(ORI)	This Manual
3	A34EAC01X06(PHI)	This Manual
4	A34AGT14X71(CPT)	This Manual

CHANGE PARTS LIST -1/2

!

= ⚠ SAFTY PARTS

C

= Components marked

All components used on this model at the production line are shown in this service manual.

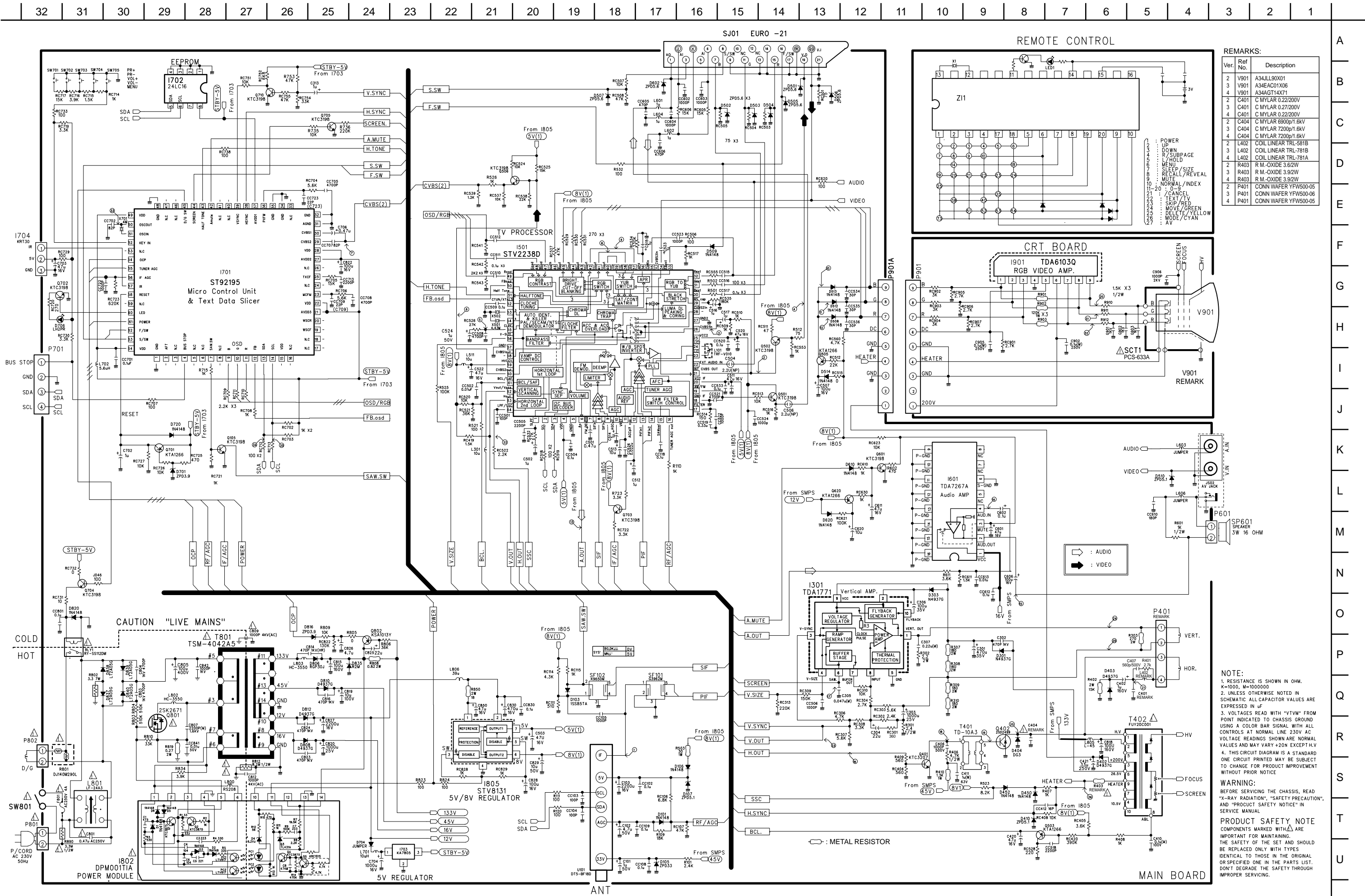
However, please note that not all components will be available as spare parts for after-sales service.

Components marked S and O are designated as spare parts for service and will be stocked at the spare parts centers.

Components marked X and R are not designated as spare parts for after sales service, and will not be stocked at the spare parts centers.

UNIT-NAME	!	C	REF-NO	PARTS-NO	PARTS-NAME	SUFFIX&MODEL								
						TV-C1400 2KY	TV-C1400 2EZY	TV-C1400 2KHY	TV-C1400 3KY	TV-C1400 3EZY	TV-C1400 3KHY	TV-C1400 4KY	TV-C1400 4EZY	TV-C1400 4KHY
MAIN		V	901	S4-859-607-140	CRT A34JLL90X01	a	b	c
		V	901	S4-859-606-240	CRT A34EAC01X06	.	.	.	d	e	f	.	.	.
		V	901	S4-859-609-841	CRT A34AGT14X71	g	h	i
		C	401	SC-MYE-2D2-24J	C MYLAR 200V 0,22	a	b	c
		C	401	SC-MYE-2D2-74J	C MYLAR 200V 0,27	.	.	.	d	e	f	.	.	.
		C	401	SC-MYE-2D3-04J	C MYLAR 200V 0,3	g	h	i
		C	404	SC-MYT-3C6-92J	C MYLAR 1,6kV 6900pF	a	b	c
		C	404	SC-MYH-3C7-22J	C MYLAR 1,6kV 7200pF	.	.	.	d	e	f	g	h	i
		C	407	SC-CXB-2H5-61K	C CERA 500V 560pF	a	b	c	d	e	f	g	h	i
		L	402	S5-8H0-000-062	COIL LINEARITY TRL-581B	a	b	c
MAIN		L	402	S5-8H0-000-058	COIL LINEARITY TRL-781B	.	.	.	d	e	f	g	h	i
MAIN		P	401	S4-859-240-020	CONN WAFER YFW500-05	a	b	c	.	.	.	g	h	i
MAIN		P	401	S4-859-240-120	CONN WAFER YFW500-06	.	.	.	d	e	f	.	.	.
MAIN		R	401	SR-N01-B27-2JS	R METAL 1W 2,7K	a	b	c	d	e	f	g	h	i
MAIN		R	403	SR-S02-Y36-9JS	R M.-OXIDE 2W 3,6	a	b	c
MAIN		R	403	SR-S02-Y39-9JS	R M.-OXIDE 2W 3,9	.	.	.	d	e	f	g	h	i

SCHEMATIC DIAGRAM - 1 (MAIN SECTION) (For Version 2, 3 and 4)





アイワ株式会社 〒110-8710 東京都台東区池之端1-2-11 ☎03(3827)3111 (代表)
AIWA CO.,LTD. 2-11, IKENOHATA 1-CHOME, TAITO-KU, TOKYO 110-8710, JAPAN TEL:03 (3827) 3111